

# DEF Valves

## Diesel Exhaust Fluid Control for SCR Systems



### Typical Applications:

- Ocean Vessels and Large Ships
- Mining, Oil & Gas, Rail, and Industrial Engines
- Large Scale Stationary Diesel Generator Sets

### Product Features:

- Control DEF between multiple SCR system tanks with cartridge style 2-way normally open & normally closed solenoid valves
- Provide air assist for DEF dosing with additional cartridge style 2-way normally closed air valve
- Designed for use with remote & buffer tank SCR systems
- DEF Control Valves are suitable for SCR systems in high horsepower diesel engine applications



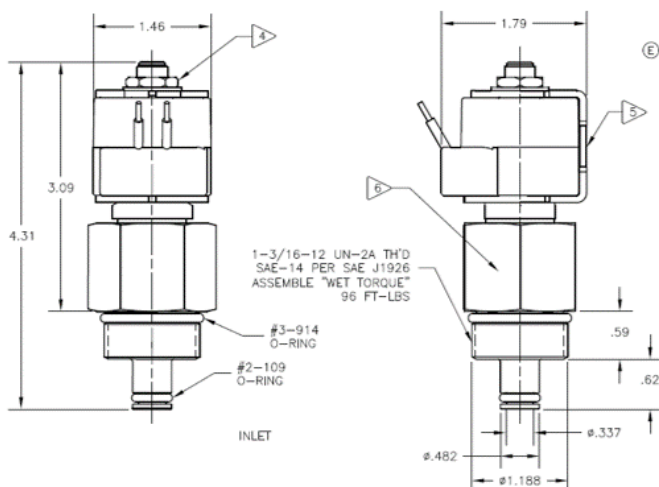
### Product Specifications

<b>Valve Types:</b>	2-Way, Normally Closed (NC) and 2-Way, Normally Open (NO)
<b>Cv:</b>	2-Way NC DEF Valve 1.0±10%, 2-Way NC Air Valve 0.5±10%, 2-Way NO DEF Valve 0.12±10%,
<b>Orifice:</b>	2-Way NC DEF Valve 0.281, 2-Way NC Air Valve 0.188, 2-Way NO DEF Valve 0.086
<b>Operating Pressure Differential:</b>	2-Way NC DEF Valve 1-10 Psig, 2-Way NC Air Valve 60±3 Psig, 2-Way NO DEF Valve 145±3 Psig
<b>Power:</b>	22 Watts Steady State Max
<b>Coil:</b>	Voltage 24 Vdc, 28.5 Vdc Max @ 60° C Fluid & Ambient Temperature
<b>Coil Resistance:</b>	29.0 Ohms ±8% @70° F (Room Temperature)
<b>Corrosion Protection For Coil Yoke:</b>	240 Hrs Salt Spray Min Per Vmr-0469 & Astm B117
<b>Doc:</b>	25 Ma Minimum
<b>Life Requirement:</b>	400,000 On/Off Cycles with No Significant Reduction in Performance
<b>Filtration Required:</b>	100 Microns Minimum
<b>Ambient Temperature:</b>	(-40) - 60° C
<b>Duty Cycle:</b>	30% to Continuous
<b>Fluid Media:</b>	DEF (33% Urea, 67% H2O) and Air
<b>Fluid Temp:</b>	DEF (-9) - +60 C, Air (-40") - +60 C
<b>Coil Type:</b>	Class H Molded Coil
<b>Lead Length:</b>	8.00 ±.75/-0.00 Inches from Coil to Connector
<b>Connector P/N:</b>	V1-27-504 (Tyco 776428-3)
<b>Wetted Materials:</b>	300 & 400 Series St. EPDM, & FKM

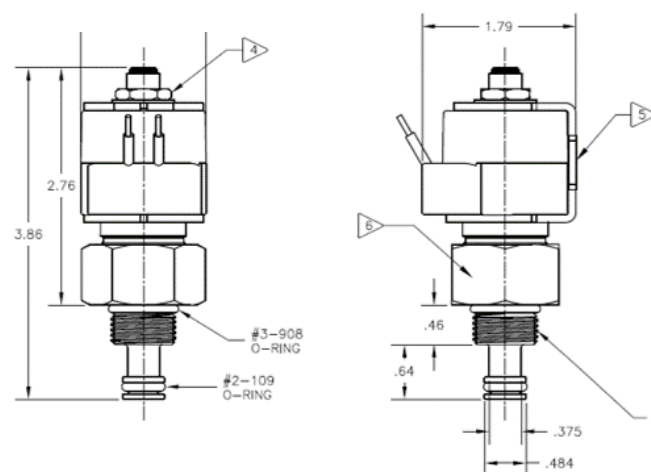
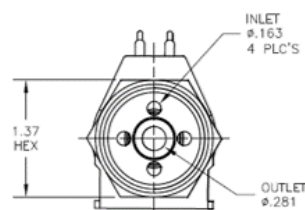


ENGINEERING YOUR SUCCESS.

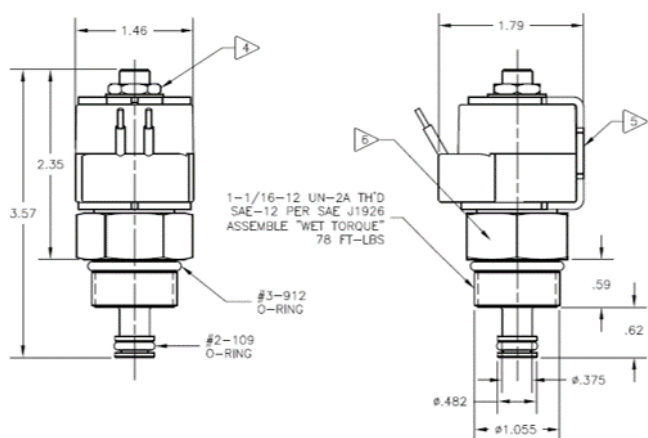
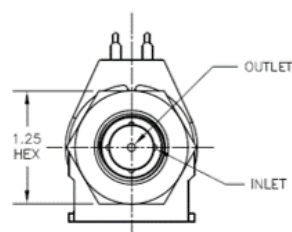
## Dimensions



2-Way Normally Closed DEF Valve



2-Way Normally Open DEF Valve



2-Way Normally Closed Air Valve

